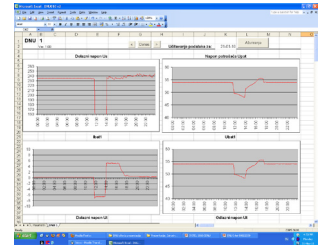


POWER ELECTRONICS



SDNU - System for Remote Monitoring & Control of Power Electronic Devices

- Simultaneous monitoring and control of power electronics from different vendors, technologies and generations
- Elements of the SDNU system:
 - Peripheral device for monitoring and control - DNU24
 - Monitoring and control center (local)
 - Main monitoring operations center
- Communication between monitoring and control center and DNU24 through TDM, IP and GSM telecommunication network, communication through SNMP to main centre



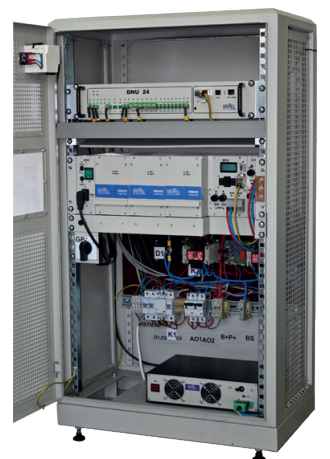
SN12 - Power Supply System 48 Vdc, nom. / 1200 W

- Compact modular power supply system:
- Basic configuration, up to 3 rectifier modules, 1200 W (54.6 V/7.5 Ax3)
- Extended configuration, up to 6 rectifier modules, 2400 W (54.6 V/7.5 Ax6)
- Full front access design – ease to install and use
- Optimal Charging of Batteries
- ETSI and 19" version



SN12/110 - Power Supply System 110 Vdc, nom. / 2400W

- Compact modular power supply system, up to 3 rectifier modules, 2400 W (110 V/7.5 Ax3)
- Full front access design – ease to install and use
- Optimal Charging of Batteries (lead-acid or NiCd)
- Optionally auxiliary power supply for additional set battery set or extended output voltage range
- For use in the industrial and similar systems



IRITEL
*bright
connections*

TELECOMMUNICATIONS AND ELECTRONICS

<http://www.iritel.com>

e-mail: info@iritel.com

DC UPS - Uninterruptible power supply with DC output voltage 300 Vdc

- DCUPS, based on reliable work of DC power supply systems, provide real uninterruptible power supply for IT equipment with simple working principle, 300/400/600/800 W
- DC UPS is particularly well applicable in systems which already have equipment supplying from uninterruptible 24/36/48/110 Vdc voltage
- Working time autonomy depends only on existing battery capacity – no need for special battery packs



AKUP - Hot-swap constant current/power battery load

- No need for disconnecting user equipment from batteries during capacitive tests (power supply system stay uninterruptible)
- Programmable discharge of batteries, constant current or power
- Graphical and numerical results of battery capacitive tests
- Communications with remote monitoring and control centre is available
- Different voltages and power ranges are possible: 12/24/36/48/110 Vdc, 1-10 kW or more

SF25- Phase Selector

- SF25 - additional level of security in the overall power supply system
- Monitoring the voltage of each input phase choosing and forwarding to the user priority phase
- Maximum load current 25 A
- Voltage and time hysteresis during restore of the correct phase



Customer related Power Electronics Program

- DC/DC 24 V/5 V 40 A
- DC/DC power supply for LED strings 350ma/110 Vdc
- Supply 230 Vac/22 A

