



ARK3000

ANTENNA DISTRIBUTION SYSTEM

- 8 antenna inputs and 16 receiver outputs
- Frequency range 20 – 3000 MHz
- Solid state switching matrix
- Seamless Integration
- Local and remote control (Ethernet) as RoIP element
- Modular structure



IRITEL
*bright
connections*

ARK3000 Antenna Distribution System

Antenna Distribution System ARK3000 receives signals from the eight antennas in the frequency range from 20 MHz to 3 GHz and distributes / switches received signal to the sixteen receivers whereby any of RF outputs can be assign any antenna, or pre-defined combination of antennas.

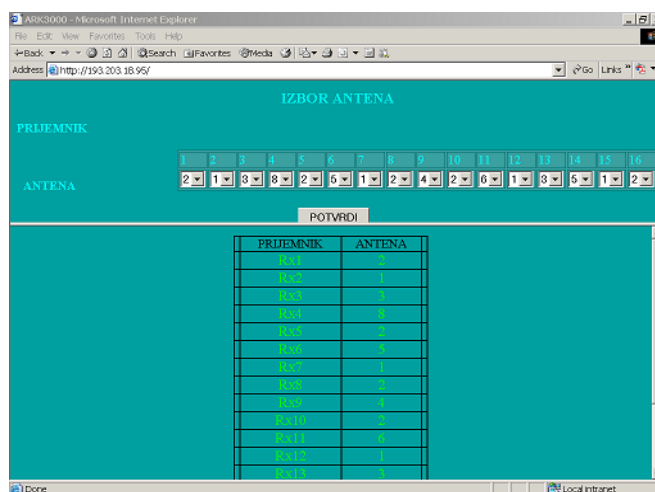
- Control via RS232 or USB interface
- Adaptation of protocols and structure of management posts in order to emulate the existing antenna distributor

General characteristics

- Control
 - Local via front panel (touchscreen)
 - Remote via Ethernet link, using any Internet browser via the intuitive user interface
- Easy integration into automated systems for monitoring radio spectrum and radio-surveillance
- Working in an autonomous / manual mode

Options

- Digitally controlled attenuators on inputs
- DC power supply 12 V/24 V/48 V
- Different types of input connectors
- Different types of input filters



Control over Internet-a

TECHNICAL SPECIFICATIONS

Antenna Inputs

Number of inputs	8
Frequency subband input	
VVF1:	20 – 88 MHz 2 inputs
VVF2:	110 – 180 MHz 2 inputs
VVF/UVF1:	225 – 470 MHz 2 inputs
UVF1:	100 – 1400 MHz 1 input
UVF2:	500 – 3000 MHz 1 input
Input impedance	50 Ω
Input SWR	≤ 3
Maximum input level	+ 17 dBm
Attenuation of input to output	
VVF1	≥ 60 dB
VVF2	≥ 50 dB
VVF/UVF1	≥ 50 dB
UVF1	≥ 50 dB
UVF2	≥ 50 dB

RF outputs

Number of RF outputs	16
Output impedance	50 Ω

Output SWR	≤ 1,5
1dB compression point	> +10 dBm
Attenuation between any two outputs	
VVF1	≥ 50 dB
VVF2	≥ 45 dB
VVF/UVF1	≥ 45 dB
UVF1	≥ 45 dB
UVF2	≥ 40 dB
IP2 (the second order intercept)	min 35 dB
Type of connectors (input/output)	N
Gain	min 1 dB
Noise ratio	≤ 5 dB
Interface for remote Control	Ethernet 10/100 Mbit/s
Power	220V ±10 %, 50 Hz
Consumption	50 VA
Dimensions	480 x 133 x 365 mm
Weight	15 kg
Operating temperature range	-5 do +45 °C